



# Oakgrove Place

East Hunsbury, Northampton

oriordanbond  
SALES & LETTINGS



# Oakgrove Place

East Hunsbury

NN4 0SB

PRICE £239,995

A beautifully presented two bedroom semi-detached home, situated in a cul-de-sac, within the popular area of East Hunsbury, benefitting from no onward chain.

This immaculate property offers accommodation over two floors comprising entrance hall with stairs to the first floor and doors to all rooms. There is a modern re-fitted kitchen with fully integrated appliances to include oven, hob, extractor hood, fridge, dishwasher and washer/dryer and a spacious sitting/dining room with feature fireplace, storage cupboard and re-fitted patio doors to the rear garden. To the first floor is access to the loft space, a storage/linen cupboard, doors to two double bedrooms and a modern re-fitted bathroom with shower over the bath. Outside, the property includes a driveway for several cars and a wonderful south facing rear garden with paved patio seating area leading to a lawn with shed and timber fencing to enclose. Further benefits include uPVC double glazing and gas radiator heating with a refitted combination boiler. (A/561/L)

### Additional information

- Council Tax Band: B
- Energy Efficiency Rating: D

### Viewing

Viewing strictly by appointment – details below

### Disclaimer

O’Riordan Bond Estate Agents Limited has not tested apparatus, equipment, fittings or services and so cannot verify they are in working order. The buyer is advised to obtain verification from their solicitor or surveyor.

O’Riordan Bond Hunsbury Sales

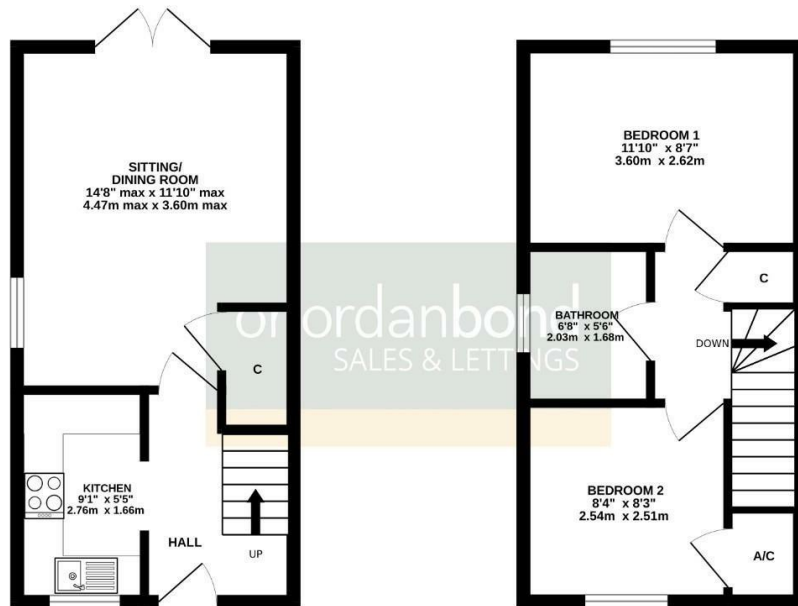
01604 706007

hunsbury@oriordanbond.co.uk



GROUND FLOOR  
280 sq.ft. (26.0 sq.m.) approx.

1ST FLOOR  
280 sq.ft. (26.0 sq.m.) approx.



TOTAL FLOOR AREA: 561 sq.ft. (52.1 sq.m.) approx.

Whilst every attempt has been made to ensure the accuracy of the floorplan contained here, measurements of doors, windows, rooms and any other items are approximate and no responsibility is taken for any error, omission or mis-statement. This plan is for illustrative purposes only and should be used as such by any prospective purchaser. The services, systems and appliances shown have not been tested and no guarantee as to their operability or efficiency can be given. Made with Metropix 02/25